

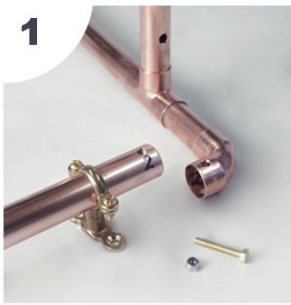


STEEL ROOTS
DESIGN

INSTALLING A WALL MOUNTED SHELVING UNIT

For our larger shelving units (larger than 1m in any direction) we strongly recommend that they are installed by a competent tradesperson due to their size and weight. In most cases 2 people will be needed for safe installation. If you are unsure as to whether it is appropriate to install the unit yourself, or how to fix correctly to the type of wall you have, please don't hesitate to contact us for advice. **NOTE:** The fixings supplied are only for use in a 'hardwall' (brick, concrete block etc.) and must not be used in other types of wall. Ensuring that you have strong fixings into the wall is essential for the safe and proper installation of the unit. Our smaller shelving units do not need any assembly before fixing to the wall.

If you are installing a larger shelving unit it will arrive in sections and must be bolted together using the brass bolts and 'nylock' nuts supplied. Match up the numbers on the inside and outside of the pipes. Use a twisting motion to push the pipe in if it feels stiff and rotate until the holes line up and the bolt moves all the way through easily.



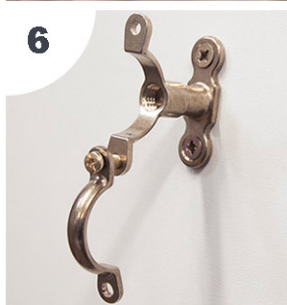
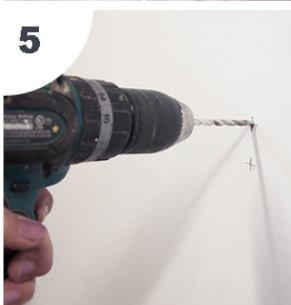
Tighten the nut using 2 x adjustable wrenches or spanners. Ensure the bolts are tight, but avoid over-tightening and denting the pipe.

In some cases the brass rings will be supplied separately. If so, measure a short distance (3-5cm) from the end of each horizontal pipes and screw the clips to the frame as shown in step no. 5.



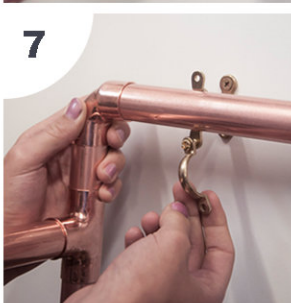
Your frame will now be fully assembled. Before attaching the shelves, hold against the wall in position. Make sure that the frame is the correct way up (top and bottom) and using a spirit level check that the frame is level. Mark the hole positions on the wall. For larger units 2 people are needed.

Remove all the brass rings from the frame and drill the wall in the marked positions.



Fix the brass rings to the wall leaving the front clip hanging down ready to install the frame.

Fix the frame only, without shelves, to the wall. If it will not be possible to install the shelves after the frame has been fixed to the wall (eg. in an alcove or close to cabinets) the shelves must be attached to the frame first and then the whole unit fixed to the wall. This will need two people and great care must be taken as the whole unit including the shelves will be heavy.



The unit can slide slightly left and right to ensure the correct position before giving the brass rings a final tighten. Before installation the brass rings can be unscrewed very slightly from their back plates to allow for an uneven wall, but all fixings must be tight and secure to ensure safety.

Once the frame is attached to the wall the shelves can be installed. In most cases these will be labelled on the back to identify their position and will be predrilled to allow fast installation. Make sure the shelves overhang an even amount on either side left and right. Ensure there is an even gap in front and behind the shelf (usually a 1cm gap).



Make sure the copper pipe brackets are straight and then secure the shelves with screws. (2 types of screws are usually supplied to allow for a choice of fixings).